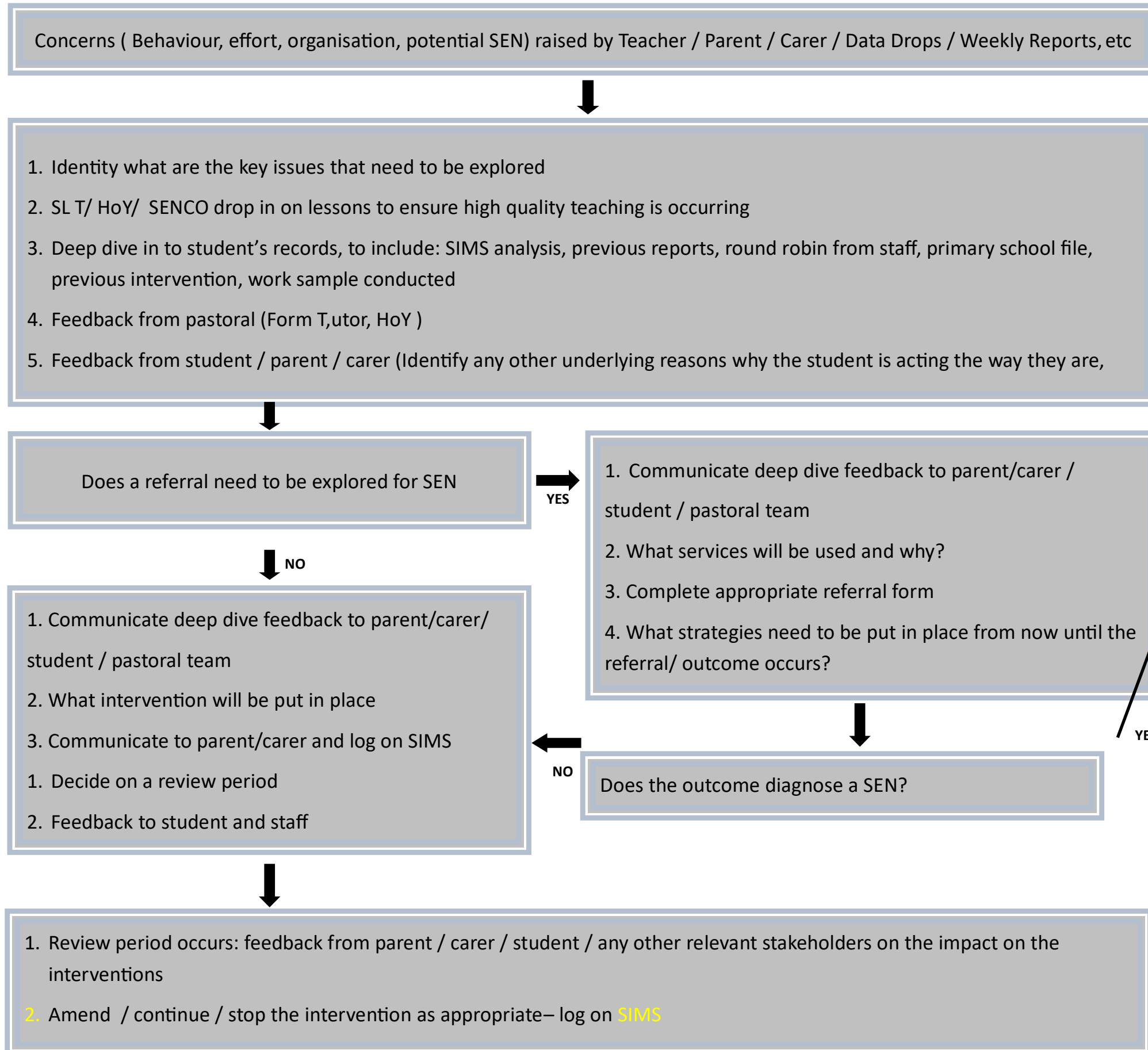


WHSG INTERVENTION FLOW CHART

(4 POINT CYCLE OF ASSESS, PLAN, DO, REVIEW)



**PRIOR SEN DIAGNOSIS OR
DIAGNOSIS MADE AS A RESULT OF A WHSG REFERRAL**

ASSESSMENT CONFIRMS SEN DIAGNOSIS

1. What does the SEN report say?
2. Parent / Carer/ student / pastoral / SENCO thoughts on the diagnosis
3. SSP created with key stakeholders
4. What interventions need to occur?
5. What reasonable adjustments need to be made?
6. Student added to SEN Register at appropriate level
7. Log SEN intervention

MONITORING OF SEN

1. Through SSP meetings/ attendance reports / data drops / teacher feedback / work samples / drop ins / parent/carer and student feedback
2. Log SEN intervention on SSP minutes and SSP

REVIEW OF SEN

1. Is this intervention working according to the school / student / parent / carer?
 - If yes, how do I know?
 - If no, why not and what needs amending?
 - Does the intervention need to move up a stage?
2. Does an EHCP need to be investigated?

BEHAVIOUR TOOLS FOR SUPPORTING STUDENTS

| | |
|--|--|
| <p>Stage 1 In School</p> | <p>Root cause analysis/Positive parental engagement/SEN discussion/Rewards/Consistent approach to child's behaviours communicated to staff/School nurse/In lesson support/Adult mentor/Adapted timetable/Timeout (lessons/break times)/Team around the child – internal/Family Support/Counselling/Staff training programme/Specialised behavioural support groups/Reflective practice/Student Support Plan/ School EHCP review/EWO Involvement</p> |
| <p>Stage 2 Outreach</p> | <p>Root cause analysis 2/EHAT/School Early Help support/Targeted Youth Support groups/Outreach work with other provisions/Team Around the Child External Support/SEN Assessment and Support/Educational Psychology/SALT/CAMHS/Teacher forum/Paving the Way/MASH referral/Positive Parental Engagement (Limes support)/Domestic Abuse Support (Limes)/Vulnerable Pupil Panel/1 to 1 Targeted Youth Support/Youth Offending Team/School nurse/Limes Outreach/Turn Around</p> |
| <p>Stage 3 Complex Outreach</p> | <p>Root cause analysis 3/Personal Support Plan/Adjusted/Reduced timetable/Restorative Justice Framework/Respite to another school/Turn Around Plus/Managed move/Alternative Provision/ SEND caseworker engagement (for child with EHCP)</p> |